

FABULUX LED

MAKING FABULOUS PRODUCTS



PTF1935 series

Higher brightness/Higher contrast/Energy-saving



●Higher contrast ratio, better video performance



SMD1921
Contrast ratio 5,000:1

SMD1935
Contrast ratio 10,000:1



SMD1935

SMD1921



SMD1921

SMD1935

SMD1935 gives double higher contrast with more black screen.

Video content is more vivid and can be seen clearly under the strong sunshine !

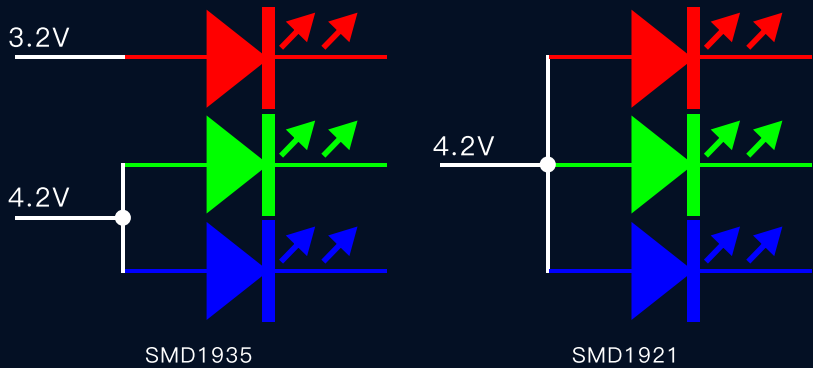
SMD1935 VS SMD1921

Higher brightness with energy-saving

Higher stability with longer lifespan

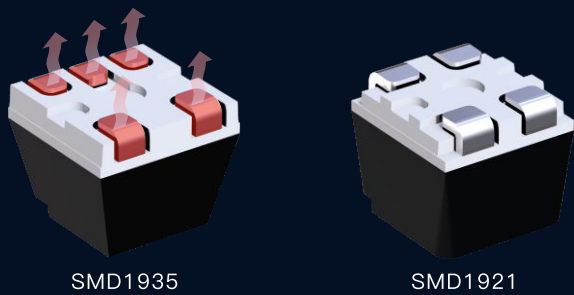
●Exclusive CCES Technology

Fabulux develops exclusive CCES(Common Cathode Energy Saving) technology, to feed the RGB chips separately, Red chip with 3.2V and Green and Blue with 4.2V; which can save the power consumption **15%** at least.

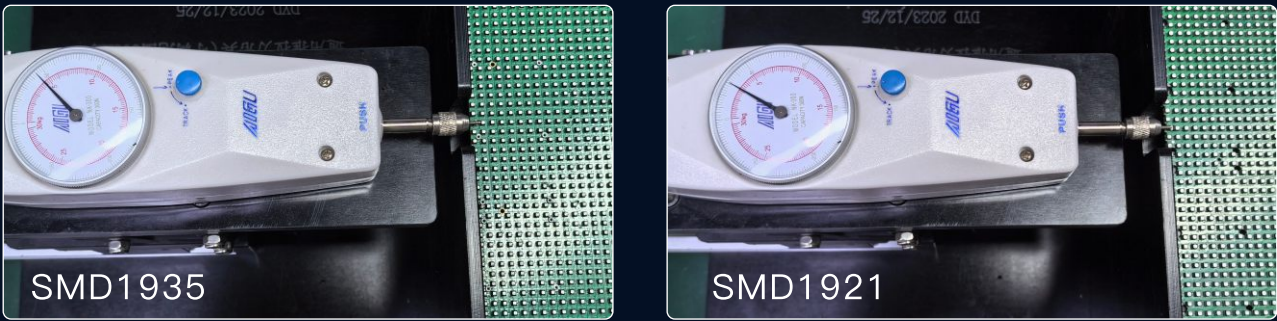


●5 Legs patented design, higher stability and better heat radiation

There is 5 legs on our patented SMD1935, which is of more area of heat radiation. It will make the LED more stable.



●Withstand more thrust



SMD1935 lamp bead withstands the thrust of **4.6kg**

SMD1921 lamp bead withstands thrust of **3kg**

●Specifications

Model name	FAB-PTF3.9		FAB-PTF3.9
Pixel Pitch (mm)	3.91		3.91
Pixel Density (dot/m²)	65,536		65,536
LED sealing Type	SMD1921		SMD1935
Module Resolution (PX* PX)	128*64		128*64
Module Size (mm * mm)	500*250		500*250
Module Weight (kg)	1.7		1.7
Module Thickness	20mm		20mm
Contrast Ratio	5,000:1		10,000:1
Horizontal Viewing Angle (Deg)	160		
Vertical Viewing Angle (Deg)	Upward viewing angle30° Down viewing angle 60 °	Upward viewing angle30° Down viewing angle 60 °	
Brightness (cd/m²)	5,000		5,000
Grey Scale (bit)	14~16		
Refresh Rate (Hz)	3,840		
Max Power consumption (W/m²)	580W±3%/m²		500W±3%/m²
Average Power consumption (W/m²)	174W/m²		148W/m²
Cabinet Size (mm * mm)	1,000*500/1,000*750/1,000*1000		
Cabinet Thickness (mm)	81.5mm		
Input Voltage (V)	AC100-240V		
Working Temperature (°C)	-40~+55℃		
Working humidity (RH)	10%~95%RH		
Maintenance type	Front/Rear		
Certificates	CE(LVD、EMC),CB,FCC, ETL		